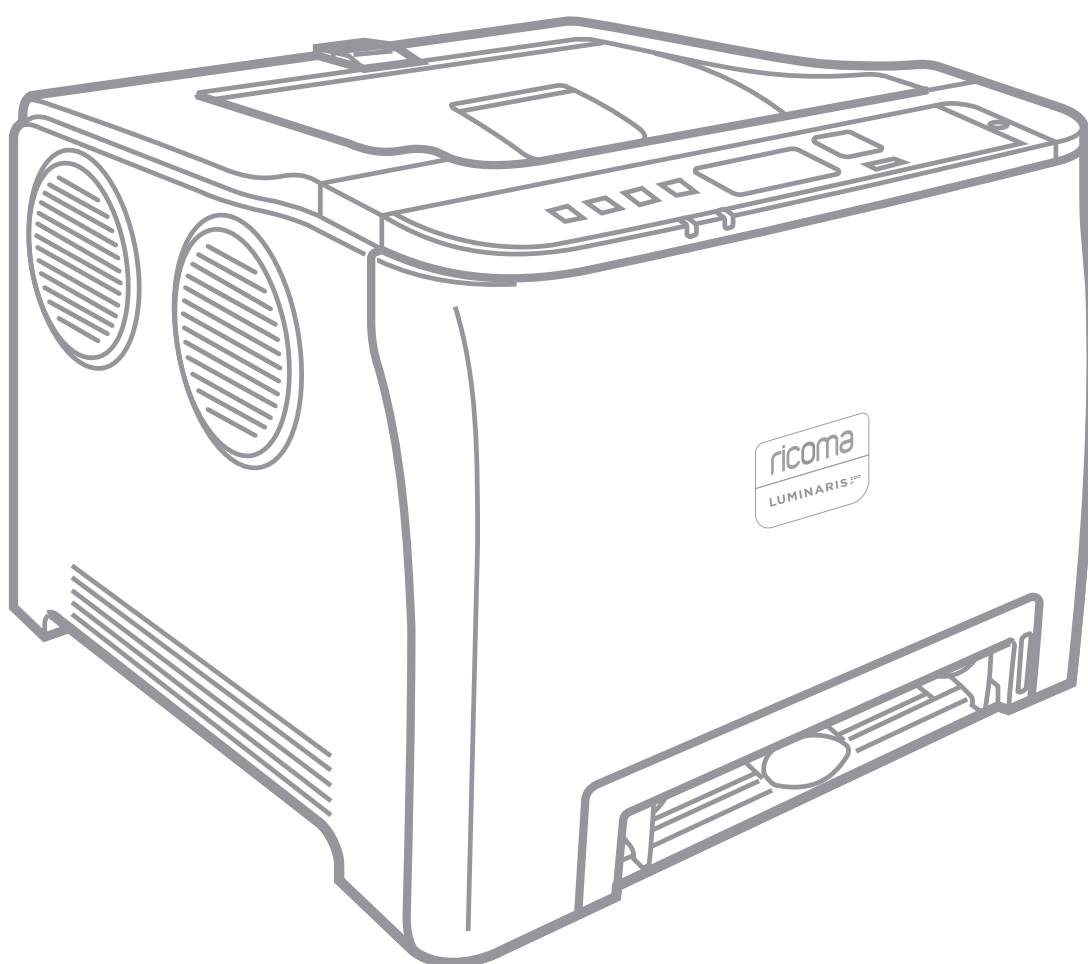
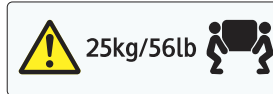
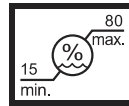
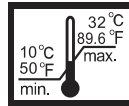
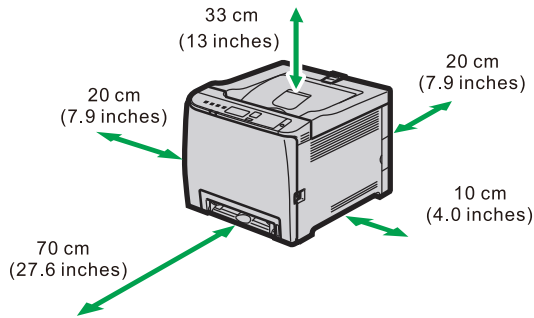


LUMINARIS²⁰⁰

Setup Guide

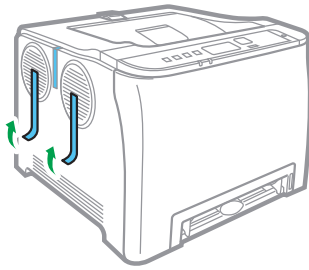


1. Setting Up the Machine

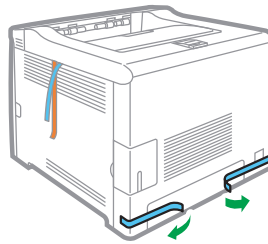


Power Source
120 - 127 V, 60 Hz, 11 A
220 - 240 V, 50/60 Hz, 6 A

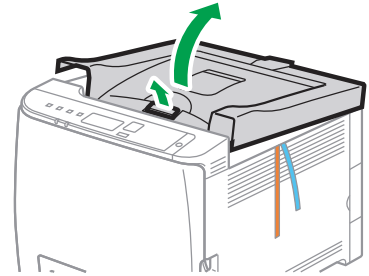
1



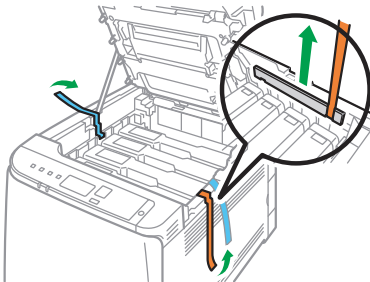
2



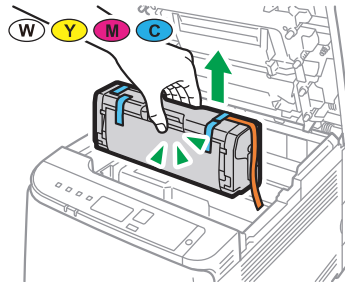
3



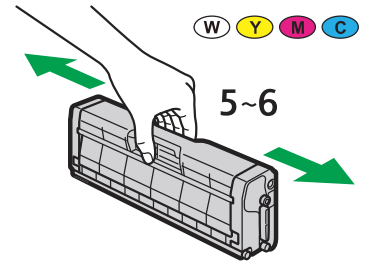
4



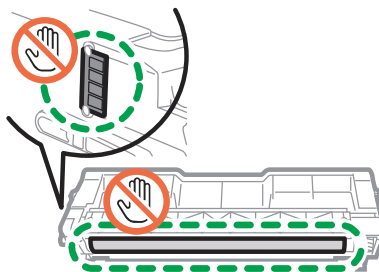
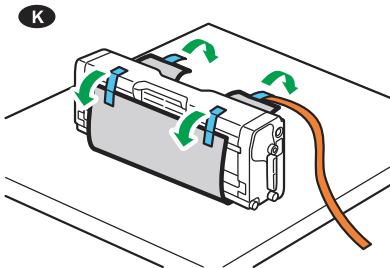
5



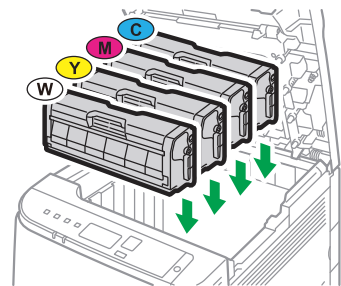
6



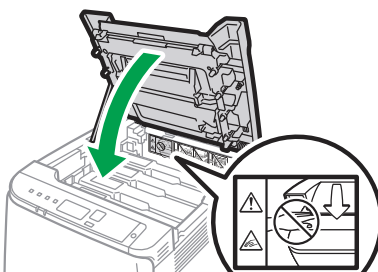
7



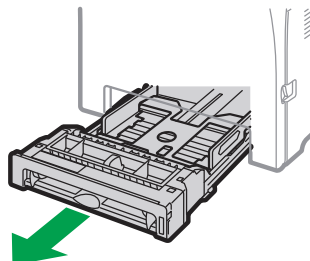
8



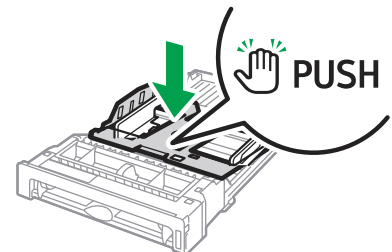
9



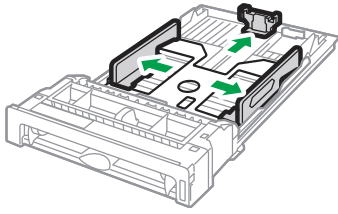
10



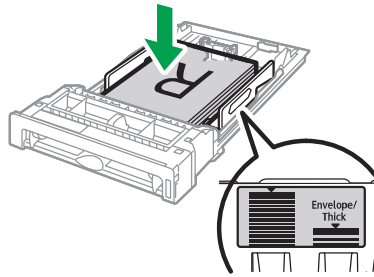
11



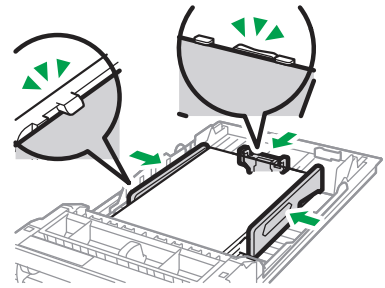
12



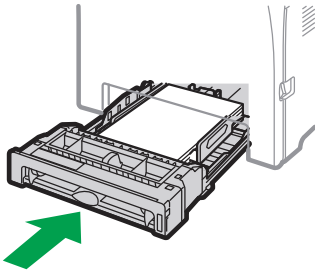
13



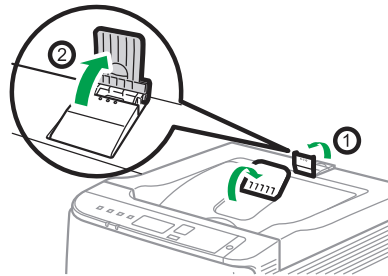
14



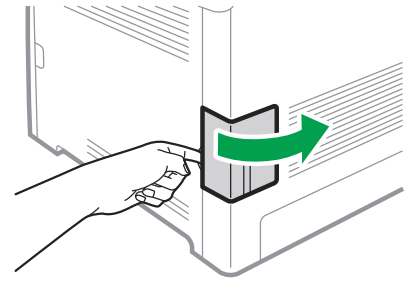
15



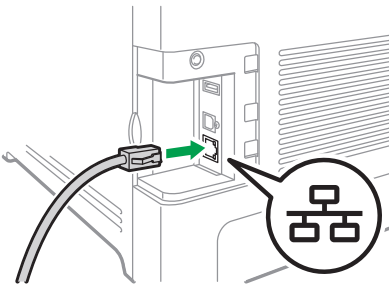
16



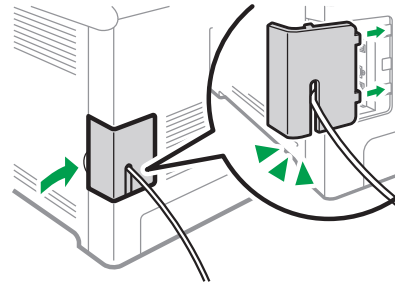
17



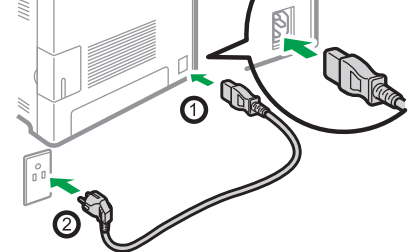
18



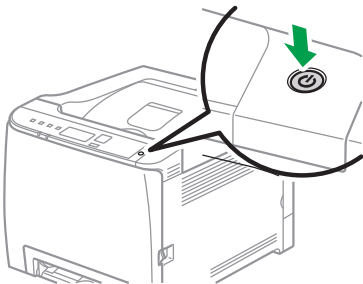
19



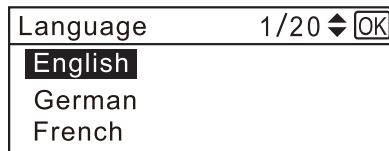
20



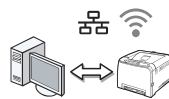
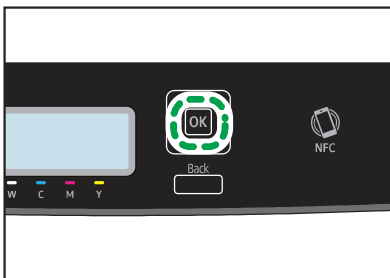
21



22



24



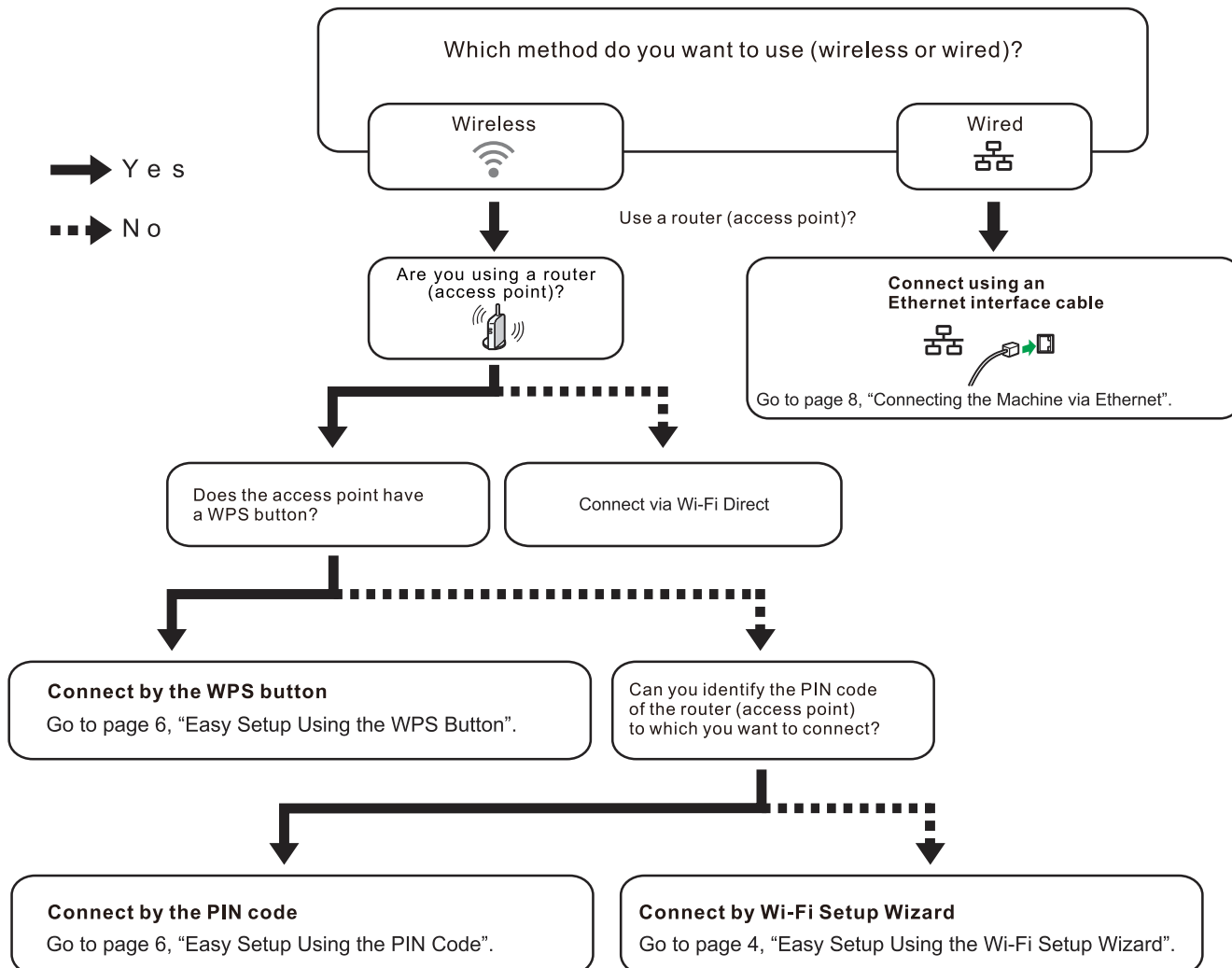
Configure the network setting.

Go to page 3, "2. Configuring the Network Setting".

2. Configuring the Network Setting

Check How the Computer Is Connected

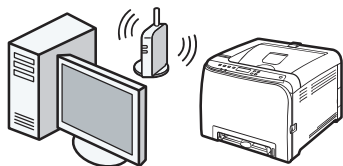
Specify how to connect to your computer according to the communication environment of your system.



Tips For Connecting Your Computer

- To connect using the WPS button, go to page 6, "Easy Setup Using the WPS Button".
- To connect using a PIN code, go to page 6, "Easy Setup Using a PIN Code".
- When the Wi-Fi Direct function is enabled, a Wi-Fi Direct compliant device is recognized as a router (access point), and direct communication among Wi-Fi Direct compliant devices becomes possible.
- When communicating using the Wi-Fi Direct function, you cannot connect to the Internet at the same time.

Connecting the Machine via Wi-Fi



Easy Setup Using the Wi-Fi Setup Wizard

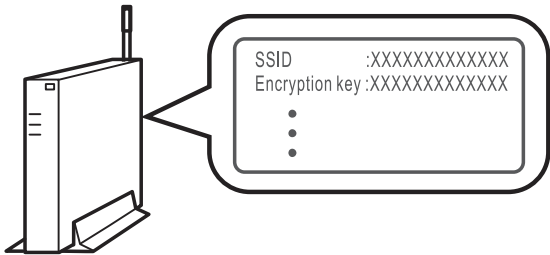
From the control panel of this machine, you can also configure the wireless LAN settings for the machine.

Note

- The following item is necessary to set up a wireless connection.
- Router (access point)

Checking the SSID and Encryption key

The SSID and Encryption key for the router (access point) may be printed on a label affixed to the router (access point). For details about the SSID and Encryption key, refer to the router (access point) manual.



Confirm the SSID and Encryption key, and write them down on the blank space as shown below.

SSID:

Encryption key:

Configuring Settings Using the Control Panel

Important

- Make sure the Ethernet cable is not connected to the machine.
1. Check that the router (access point) is working correctly.
 2. Press the [▼] or [▲] key to select [Wireless (Wi-Fi)], and then the [OK] key.

Network Wizard 1/ 2

Wired (Ethernet)

Wireless (Wi-Fi)
 3. Press the [▼] or [▲] key to select SSID of the router (access point) from the searched SSID list, and then press the [OK] key.

Wi-Fi Setup Wizard 1/ 13

Network 1

Network 2

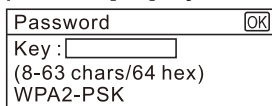
Network 3
 4. Press the [▼] or [▲] key to select the authentication method, and then press the [OK] key.

The next steps differ depending on the authentication method that you have selected. Proceed to Step 5 of the appropriate section.

- If the authentication method is set to [WPA2-PSK] or [Mixed Mode WPA2/WPA] ▶ A
- If the authentication method is set to [Open system] or [Shared Key] ▶ B

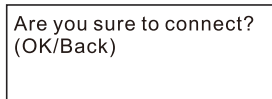
A Connecting to devices using the WPA2-PSK or Mix Mode WPA2/WPA authentication

5. Enter the encryption key using the [▼] or [▲] key, and then press the [OK] key.



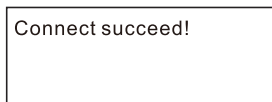
As the passphrase, you can enter either 8 to 63 ASCII characters (0x20-0x7e) or 64 hexadecimal digits (0-9, A-F, a-f).
For details about checking the encryption key, see "Checking the SSID and Encryption key".

6. Press the [OK] key.

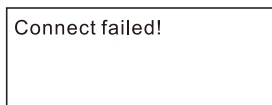


7. Check the result.

Connection has succeeded:



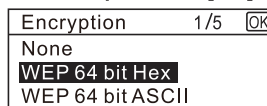
Connection has failed:



8. Press the [▼] or [▲] key to select [Quit Setup], and then the [OK] key.
9. Configuring the Wi-Fi settings is complete.

B Connecting to the devices using the Open system or Shared Key authentication

5. Press the [▼] or [▲] key to select the encryption method, and then press the [OK] key.

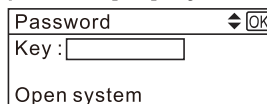


The maximum number of characters that can be entered in the encryption key field depends on the encryption method settings.

Note

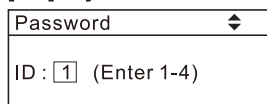
- Do not select [None] except in special circumstances. If selected, the security system will not work.

6. Enter the encryption key using the [▼] or [▲] key, and then press the [OK] key.



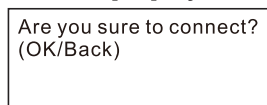
For details about checking the encryption key, see "Checking the SSID and Encryption key".

7. Enter the ID using the [▼] or [▲] key, and then press the [OK] key.



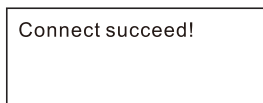
The ID is used for identifying the encryption key. You can register four encryption keys (ID 1 to 4).

8. Enter the password.
9. Press the [OK] key.

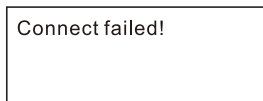


10. Check the result.

Connection has succeeded:



Connection has failed:



11. Press the [▼] or [▲] key to select [Quit Setup], and then the [OK] key.
12. Configuring the Wi-Fi settings is complete.

Easy Setup Using the WPS Button

★ Important

- Make sure the Ethernet cable is not connected to the machine.
- In Steps 10 to 12, configure each setting within two minutes.

↓ Note

- The following item is necessary to set up a wireless connection.
- Router (access point)

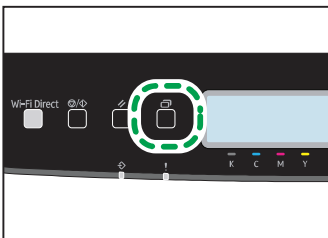
1. Check that the router (access point) is working correctly.
2. Press the [▼] or [▲] key to select [Wired (Ethernet)], and then the [OK] key.

Network Wizard	1 / 2	[OK]
Wired (Ethernet)		
Wireless (Wi-Fi)		

3. Press the [▼] or [▲] key to select [Quit Setup], and then the [OK] key.

Network Wizard	4 / 4	[OK]
Ipv4 Configuration		
Ipv6 Configuration		
Quit Setup		

4. Press the [Menu] key.



5. Press the [▼] or [▲] key to select [Network Settings], and then press the [OK] key.

Settings	6 / 8	[OK]
Wi-Fi Setup Wizard		
Network Settings		
Print List/Report		

6. Press the [▼] or [▲] key to select [Wireless (Wi-Fi)], and then press the [OK] key.

Network Settings	1 / 5	[OK]
Wired (Ethernet)		
Wireless (Wi-Fi)		
Ipv4 Configuration		

7. Press the [▼] or [▲] key to select [WPS], and then press the [OK] key.

Wireless (Wi-Fi)	6 / 9	[OK]
Current Connection		
Input SSID		
WPS		

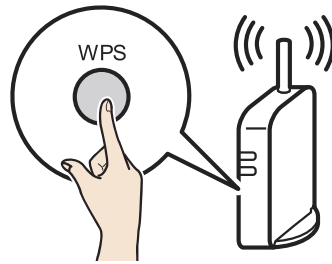
8. Press the [▼] or [▲] key to select [PBC], and then press the [OK] key.

WPS Type	1 / 2	[OK]
PBC		
PIN		

9. Press the [◀] or [▶] key to select [Yes], and then press the [OK] key.

PBC
WPS PBC Connect ?
Yes No

10. After "Connecting..." appears, press the WPS button on the router (access point) within two minutes.



- For details about how to use the WPS button, refer to the manuals for the router (access point).

11. Check the result.

Connection has succeeded:

PBC
Connection to AP has Succeeded
EXIT

- Press the [OK] key to return to the screen displayed in Step 6, and then press the [Menu] key to return to the initial screen.

Connection has failed:

PBC
Connection to AP has Failed
EXIT

- Press the [OK] key to return to the screen displayed in Step 6. Check the configuration for the router (access point), then try the connection again.

12. Configuring the Wi-Fi settings is complete.

Easy Setup Using a PIN Code

★ Important

- Make sure the Ethernet cable is not connected to the machine.
- In Steps 11 to 13, configure each setting within two minutes.

↓ Note

- To establish a connection using the PIN code, use a computer that is connected to the router (access point).
- The following item is necessary to set up a wireless connection.
- Router (access point)

1. Check that the router (access point) is working correctly.
2. Open the PIN code configuration window (web page) for the router (access point) on your computer.



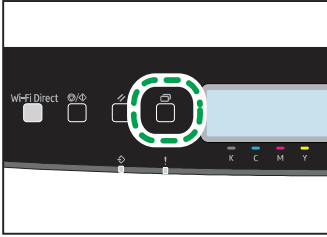
3. Press the [▼] or [▲] key to select [Wired (Ethernet)], and then the [OK] key.

Network Wizard	1 / 2	[OK]
Wired (Ethernet)		
Wireless (Wi-Fi)		

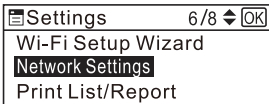
4. Press the [▼] or [▲] key to select [Quit Setup], and then the [OK] key.



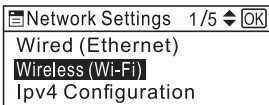
5. Press the [Menu] key.



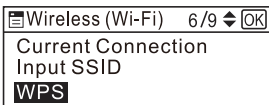
6. Press the [▼] or [▲] key to select [Network Settings], and then press the [OK] key.



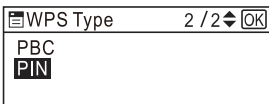
7. Press the [▼] or [▲] key to select [Wireless (Wi-Fi)], and then press the [OK] key.



8. Press the [▼] or [▲] key to select [WPS], and then press the [OK] key.



9. Press the [▼] or [▲] key to select [PIN], and then press the [OK] key.



10. Check the PIN code.



Write down the PIN code in case you might forget it.

11. Enter the machine's PIN code (8 digits) on the router's (access point) web page (The web page accessed in Step 2).



12. Execute WPS (PIN system) from the router's (access point) web page.



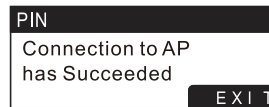
13. Press the [◀] or [▶] key to select [Connect], and then press the [OK] key.



"Please wait for 2 minutes" appears and connecting with PIN method starts.

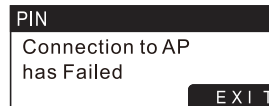
14. Check the result.

Connection has succeeded:



- Press the [OK] key to return to the screen displayed in Step 6, and then press the [Menu] key to return to the initial screen.

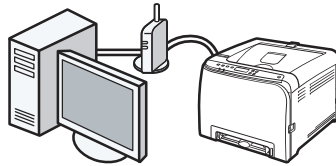
Connection has failed:



- Press the [OK] key to return to the screen displayed in Step 6. Check the configuration for the router (access point), then try the connection again.

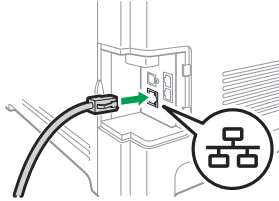
15. Configuring the Wi-Fi settings is complete.

Connecting the Machine via Ethernet

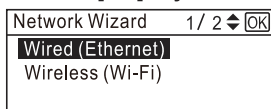


↓ Note

- When connecting the machine via the Ethernet, the Ethernet interface cable is necessary to set up.



1. Press the [▼] or [▲] key to select [Wired (Ethernet)], and then the [OK] key.



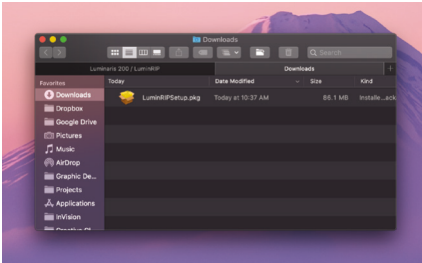
2. Press the [▼] or [▲] key to select [Quit Setup], and then the [OK] key.



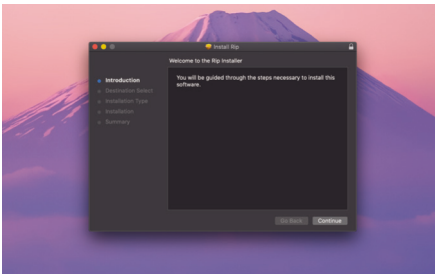
3. Installing the LuminRIP Software On Mac Or Windows

For Mac

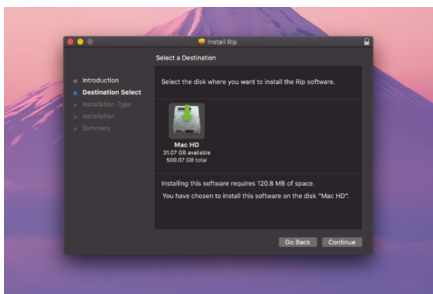
1. Click on the software link you were provided with your Luminaris 200 printer purchase. This will download the software setup file.
2. Find the setup file in your downloads and click on it to open it.



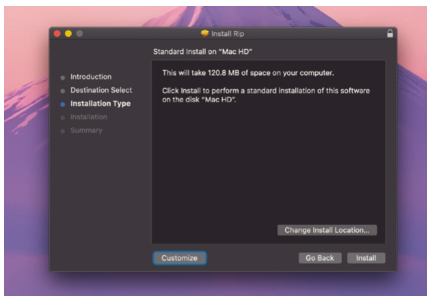
3. Click "Continue" to be guided through the steps necessary to install the software.



4. Select the disk where you want to install the RIP software.



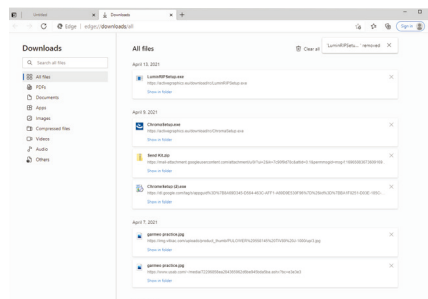
5. If you want to change the installation location, click "Change Install Location..." Once you are ready, click "Install."



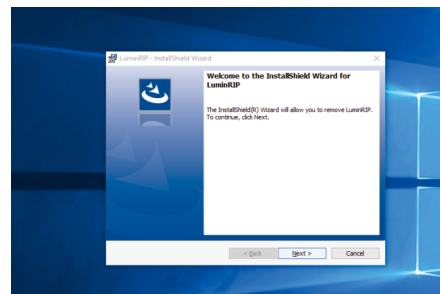
6. The screen will now say that the software was installed successfully. Click "Close" to exit.

For Windows

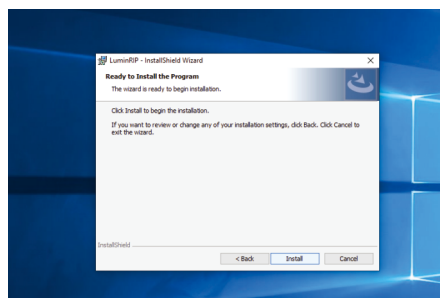
1. Click on the software link you were provided with your Luminaris 200 printer purchase. This will download the software setup file.
2. A window will pop up saying "Do you want to allow this app to make changes to your device?" Click "Yes."
3. If the installation window doesn't open automatically, find the setup file in your downloads and click on it to open it.



4. The InstallShield Wizard for LuminRIP will now open. To continue, click "Next."



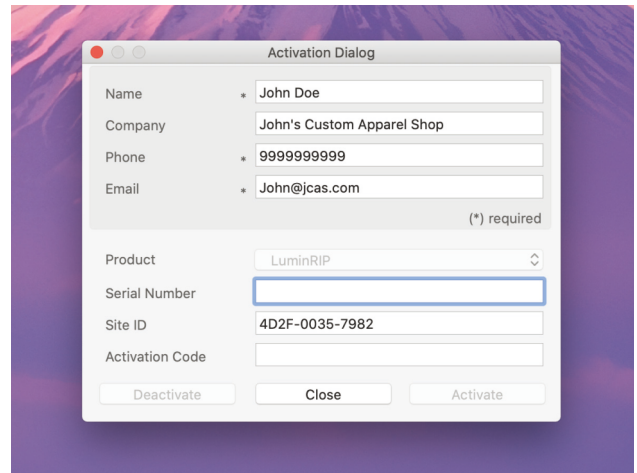
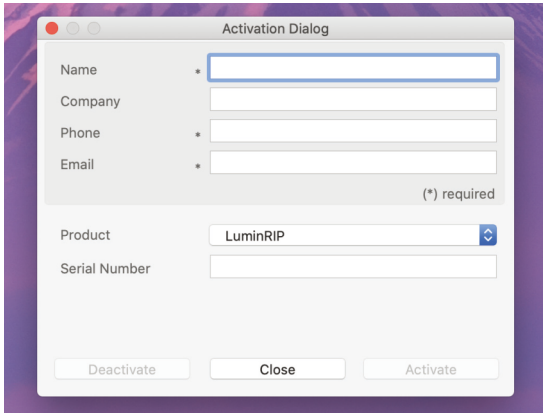
5. Click "Install" to begin installation.



6. Once LuminRIP has been successfully installed, click "Finish" to exit the wizard.

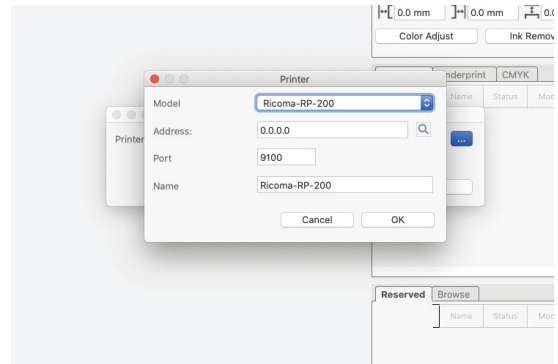
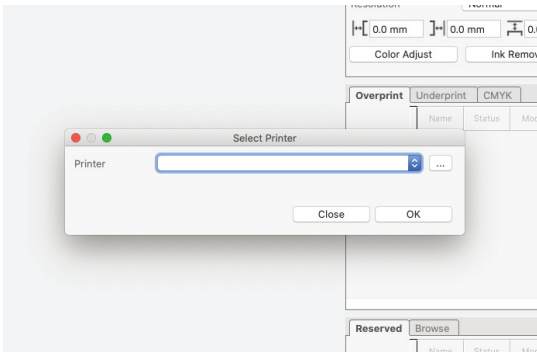
4. Activating the LuminRIP Software

1. Find LuminRIP on your computer and click on it to open the software.
2. To activate via internet, fill in the required information in the appropriate fields, including your individual activation serial number. Then, click “Activate.”
3. To activate without an internet connection, fill in the required information in the appropriate fields, including your individual activation serial number. Then, click “Activate.” You will see a warning about your internet connection. The Activation wizard dialog will now need a site key. Contact technical support to get your activation code and then click “Activate.”

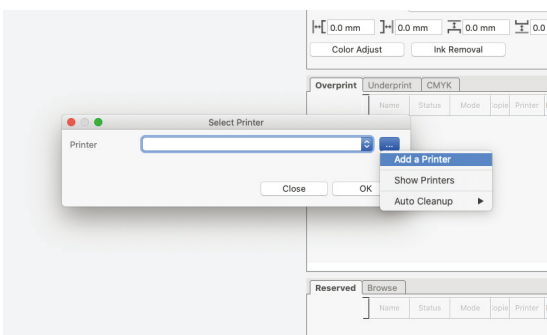


5. Setting Up Your Printer in LuminRIP

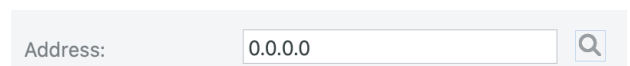
1. When you open the LuminRIP software, a window will pop up asking you to select your printer.
3. Then, input the IP address, the Port and the name of the printer.



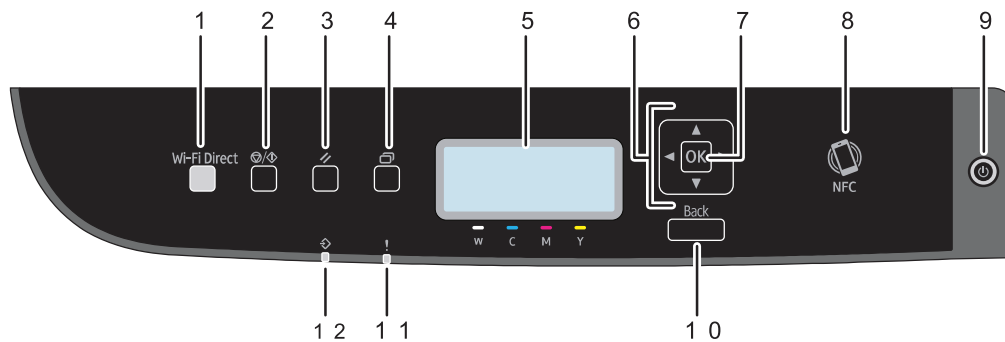
2. To add a new printer, click on the “...” button and select “Add a Printer”.



4. If your printer is connected to the local network, click on the search icon to auto-detect the address.



Control Panel Sheet



1	[Wi-Fi Direct] key	7	[OK] key
2	[Stop/Start] key	8	NFC
3	[Job Reset] key	9	[Power] key
4	[Menu] key	10	[Back] key
5	Display	11	Alert Indicator
6	Scroll Keys	12	Data In Indicator

Trademark

Android is a trademark of Google LLC.

IOS is a trademark or registered trademark of Cisco in the U.S. and other countries and is used under license.

Wi-Fi, Wi-Fi Direct, Wi-Fi Protected Setup, WPA, Wi-Fi Protected Access, WPA2, and Wi-Fi Protected Access 2 are registered trademarks of Wi-Fi Alliance.

Linux is a registered trademark of Linus Torvalds in the United States and other countries.

macOS and OS X are trademarks of Apple Inc., registered in the U.S. and other countries.

Microsoft®, Windows®, and Windows Server® are either registered trademarks or trademarks of Microsoft Corporation in the United States and/or other countries/regions.

Red Hat and Red Hat Enterprise Linux are trademarks of Red Hat, Inc., registered in the United States and other countries.

SUSE is a registered trademark of SUSE Linux AG.

SUSE and openSUSE are registered trademarks of Novell, Inc.

Ubuntu and Canonical are registered trademarks of Canonical Ltd.

Other product names used in this manual are for identification purposes only and may be trademarks of their respective companies.

We do not have any or all rights to these marks.

All Microsoft product screenshots are reprinted with permission from the Microsoft Corporation.



THINK BEYOND

www.ricoma.com

Ricoma Headquarters in USA

Ricoma International Corporation

11555 NW 124 Street Miami, FL 33178

TEL: (305) 418-4421 | FAX: (305) 418-5036

Toll Free: 1-888-292-6282

Website: www.ricoma.com | Email: info@ricoma.com

Ricoma Factory in China

Ricoma (Shenzhen) Co., Ltd.

Baochangli Industrial Park, Jinlong Road 3,
Shenzhen, P.R. China (Post: 518118)

Tel: +86-755-2585-7576 | Fax: +86-755-2585-7773

Website: www.ricoma.cn | Email: info@ricoma.cn