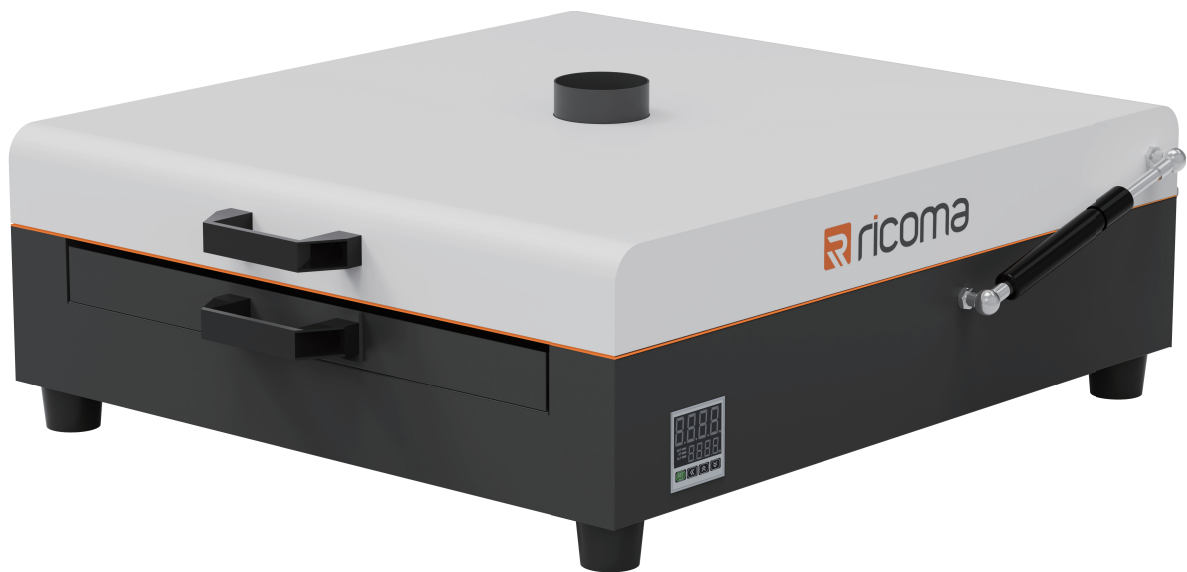


Manual

HD-25M Oven



Contents

Chapter 1. Safety instruction.....	01
1. Safety mark	01
2. Product description	01
3. Precautions before startup	01
Chapter 2. Installation diagram	02
Chapter 3. Equipment operation procedure ...	02
Chapter 4. Maintenance	03

Chapter 1. Safety instruction

1. Safety mark

Dear user:

Hello! Thank you for using this product. To enable you to better read this manual and use the product properly, the following is an explanation of the symbols and signs that appeared in our first manual:



All the contents marked with this symbol are parts that users must pay close attention to. Otherwise, improper operation may cause damage to the product or result in other losses.

2. Product description

This machine is a high-power, high-temperature device. It is forbidden to touch the places with high-temperature signs with your hands to avoid burns. Please understand the parameters of the machine before using it to prepare for operation.

HD-25M Parameters

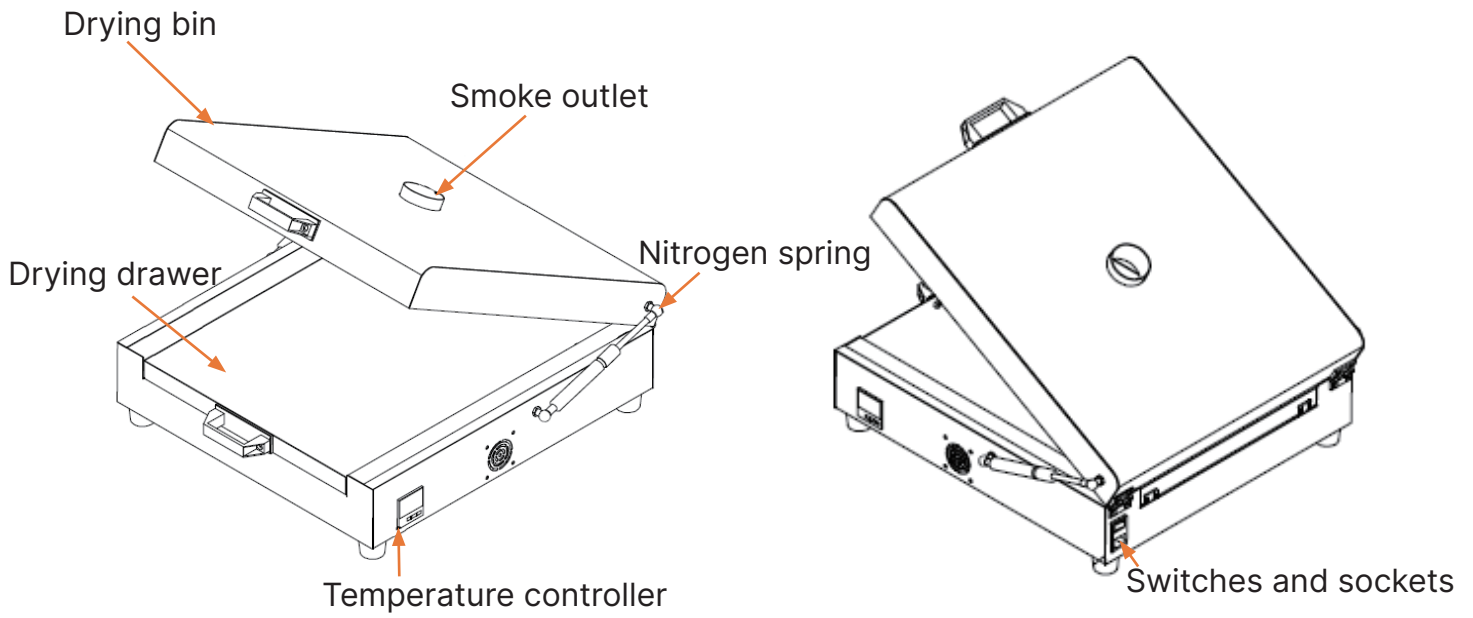
Rated voltage	Rated current	Rated power
AC 110 / 220 V	11 A / 6 A	1.2 KW
Power consumption	Net weight	Gross weight
0.8 KW - 1.2 KW	14.1 kg	17.4 kg
Equipment size	600 mm x 552 mm x 213 mm / 23.62 × 21.73 × 8.39 in	
Wooden box size	620 mm x 590 mm x 260 mm / 24.41 × 23.23 × 10.24 in	

3. Precautions before startup



- There is a danger of electric shock! You must connect the ground wire before turning on the machine. Otherwise, it may cause serious personal injury.
- The power supply must match the power supply of the machine, and the wire diameter must meet the rated requirements.
- Check whether the connection of the power supply is standard, especially pay attention to: the neutral and live wire connection needs to be correct.
- For those who are sensitive to static electricity, please take personal protective measures when operating the equipment.

Chapter 2. Installation diagram

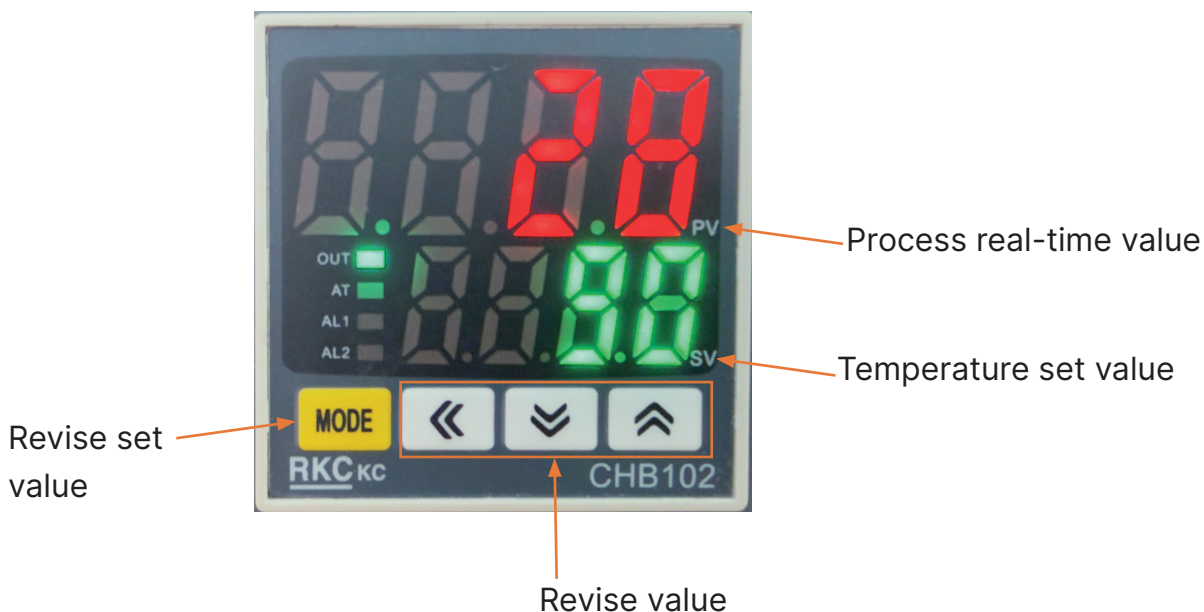


Chapter 3. Equipment operation procedure



Temperature control panel diagram

1. Confirm that the external power supply of the equipment is connected (AC 220V / 110V, 50/60HZ)
2. Make sure the grounding wire is firmly connected
3. Turn on the power switch of the oven
4. Function introduction



5. It is recommended that the "SV" setting for the drying temperature be set between 80 and 100 degrees Celsius (the specific temperature should be determined based on the melting point of the powder).
6. After adjusting these functions properly, you can proceed with the baking process.

Chapter 4. Maintenance

1. The external power supply must be disconnected when repairing or cleaning the machine.
2. Clean residual powder of drying drawer after finishing the goods every day.